



T&S BRASS AND BRONZE WORKS, INC.

2 SADDLEBACK COVE / P.O. BOX 1088 / TRAVELERS REST, SC 29690

PHONE 800-476-4103

FAX 864-834-3518



REG.#A2601
ISO #9002

Model No.

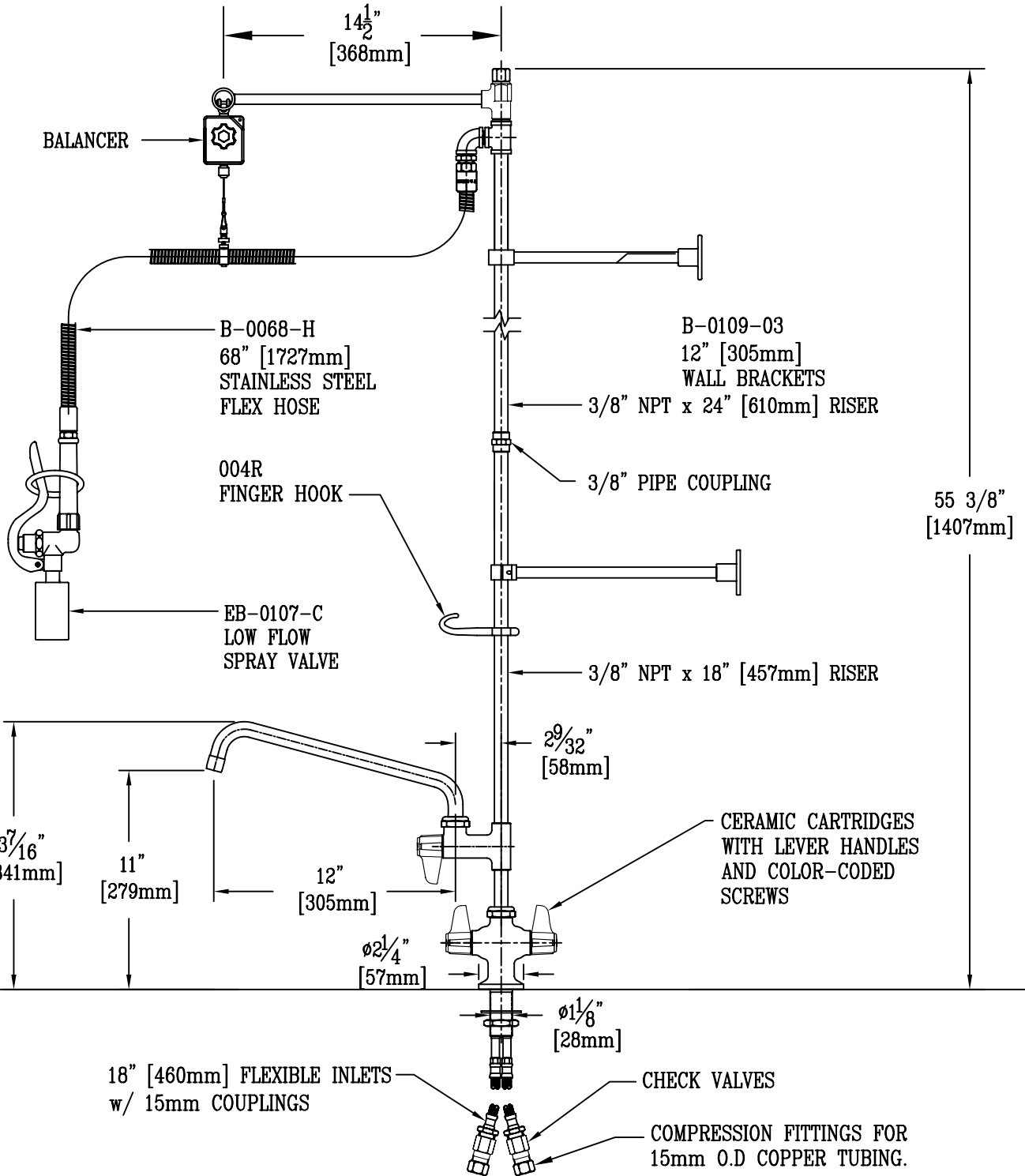
EU-2DP12-LA

Item No.:

Job Name:

Architect/Engineer Approval:

Notes:



Product Description:
 Pre-Rinse, Single Hole Deck Mount, 305mm Add-On
 Faucet, Spray Valve, 305mm Wall Bracket, 460mm
 Flexible Inlets, 1407mm Height, Swivel Extension Arm

Drawn:	Checked:	Scale:
DMH	DHL	1:8
Approved:	Date:	
JHB	02/27/09	